

Marine Radar

BR-1510

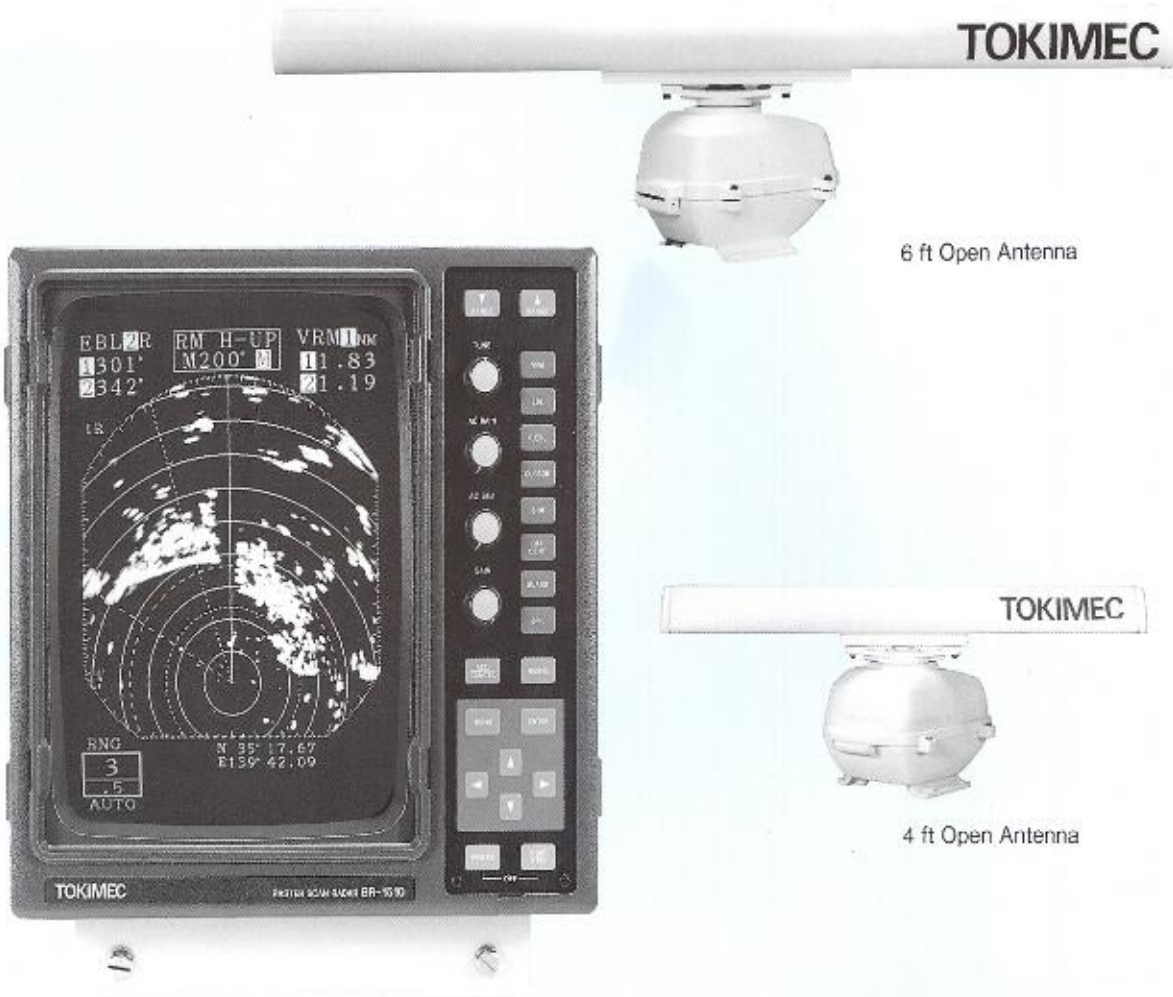


TOKIMEC INC.

BR-1510

The Futuristic Radar System

TOKIMEC Inc. is proud to introduce the new compact, high performance BR-1510 marine radar. This next generation BR-1510 series 12 inch marine radar offers many functions similar to high grade radars functions which include:



Features

- Simple operation by front-key for often-used functions
- 640 × 480 dot high resolution, clear CRT monitor
- Two EBLs (electronic bearing line) & two VRMs (variable range marker)
- Connectable to GPS for easy check of the ship's position and direction on the CRT.
- True motion indication available in case of NMEA 0183 format course/speed signal input
- Standard auto tune function
- Optional mini-ARPA function

Specifications

● General

Range	0.125--64 n mile, 11 ranges
Minimum Range Discrimination	Better than 30 meters
Range Accuracy	The larger of 1.5 % of the range or 70 meters
Minimum Range	Less than 30 meters
Bearing Accuracy	+1°
Power Consumption	
BR-1510-044	90 W approx.
BR-1510-16	120 W approx.
Input Voltage	12/24/32 V
Environmental Condition	Antenna unit -15--50 °C Display unit -10--50 °C
Humidity	95 % at 35 °C
Max. Wind Velocity	Antenna 41.0 m/s

● Display

Type	12 inch raster scan monochrome monitor
Range(n mile)	0.125, 0.25, 0.5, 0.75, 1.5, 3, 6, 12, 24, 48, 64
Range Rings(n mile)	0.0625, 0.125, 0.25, 0.25, 0.25, 0.5, 1, 2, 4, 8, 16

● Antenna

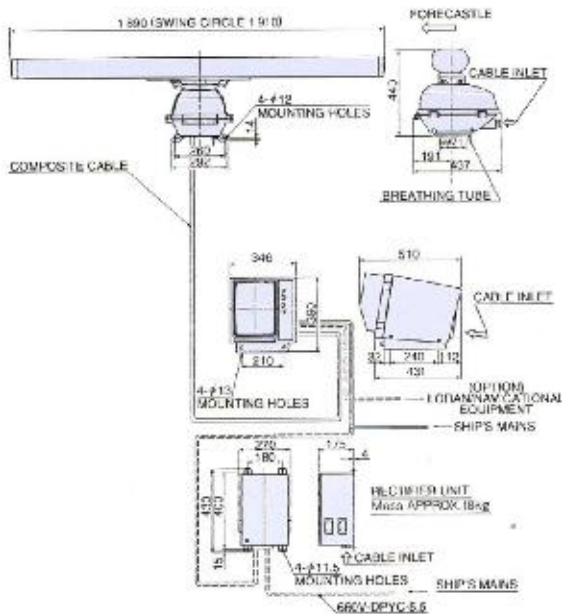
Type BR-1510-044	4 ft Open Antenna
BR-1510-16	6 ft Open Antenna
Rotation Speed BR-1510-044	Approx. 27 min ⁻¹ Nominal
BR-1510-16	Approx. 24 min ⁻¹ Nominal
Beam Width	
BR-1510-044	Horizontal 2.0°
BR-1510-16	Horizontal 1.2°
BR-1510-044	Vertical 30°
BR-1510-16	Vertical 25°
Frequency	9410 ± 30 MHz
Peak Power BR-1510-044	4 kw
BR-1510-16	10 kw
Pulse Width and PRF	0.08 μs/2550 Hz (0.125, 0.25, 0.5, 0.75, 1.5 n mile) 0.35 μs/1500 Hz (3, 6 n mile) 0.7 μs/750 Hz (12, 24, 48, 64 n mile)
Transmit Receive Select	Circulator + Diode Limiter
Mixer	MIC Frontend
IF Amplifire	60 MHz, 10 MHz/3 MHz
Noise Figure	Less than 6 dB

● Dimension & Mass

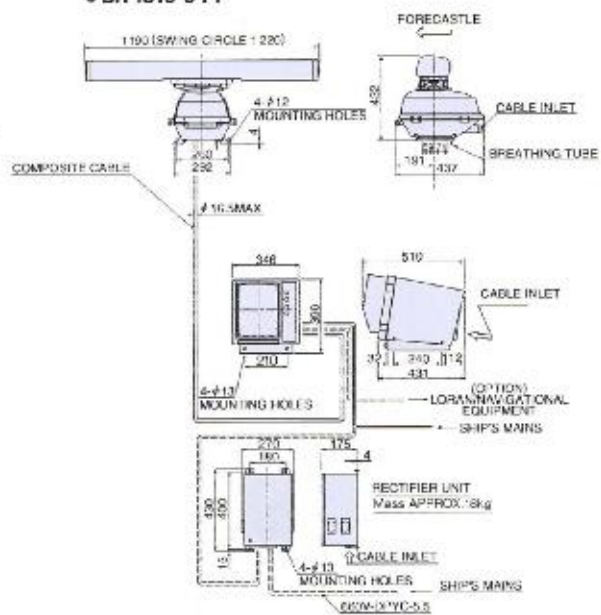
	Dimension(mm)		Mass(kg)	
	Display (H × W × D)	Antenna	Display	Antenna
BR-1510-044	390 × 346 × 431	H 432, Open Length 1190	Approx. 17.5	Approx. 24
BR-1510-16	390 × 346 × 431	H 440, Open Length 1890	Approx. 17.5	Approx. 28

Configuration

● BR-1510-16



● BR-1510-044



Notes

1: The Distance between the units as follows.

- Scanner unit to Display unit
Standard 10 m/Maximum 20 m
- Display unit to Rectifier unit Standard 3 m

2: Eliminating the interference on frequencies used for marine communications and navigation due to operation of the Radar. All cables of radar are to be run away from the cables of radio equipment (ex, Radiotelephone, Communications receiver and Direction finder etc.). Especially inter wiring cables between scanner unit and Display unit of the Radar should be not be run parallel with the cables of radio equipment.

☆ For mini-ARPA and TM display, it is required to provide Ship's heading and speed signals with NMEA0183 format. And input the Ship's heading signal from the electronic magnetic compass EMC-2



Before operating this equipment, you should first thoroughly read the operation manual.

Design and specifications are subject to change without prior notice, and without any obligation on the part of the manufacturer.

TOKIMEC

<http://www.tokimec.co.jp/>

태 양 물 산

부산시 중구 대항동 2가 35-4번지 동오빌딩 4층

Tel) 051-469-1214 / 051-442-6983 fax) 051-464-8267

홈페이지 : <http://ty4u.com.ne.kr> 이메일 : tyj@chol.com